

MANUFACTURERS & DESIGNERS OF GOLF DRIVING RANGE EQUIPMENT & ACCESSORIES SINCE 1946

WITTEK TWIST RANGE BALL WASHER

Since 1946
WITTEK
Golf Supply Specialists

Questions? 800-869-1800



www.wittekgolf.com 800-869-1800

TABLE OF CONTENTS

WELCOME	2
WARRANTY	2
UNPACKING	3
ASSEMBLY	4
OPERATION	5
MAINTENANCE	6
PARTS REPLACEMENT	7
TROUBLESHOOTING	8
SCHEMATIC	9
PARTS LIST	10

WELCOME

THANK YOU for choosing Wittek Golf! We warmly welcome you as the newest member in our driving range equipment family.

With Wittek Golf you can be assured that we share your same goals. We want all your range equipment to work for you, so we work extra hard to provide the best, highest quality, efficient product delivered promptly every time.

Our complete line of range equipment is made by us in our very own manufacturing facility using only high grade, heavy gauge galvanized steel. We are confident that our range equipment will outperform anything on the market today.

Our confidence is a result of being **PREPARED, PROACTIVE & POSITIVE.** This comes from who we are at our core - good people with high integrity and character. These values have always been the pillars to our success since 1946 and it's what we promise to deliver to you, our customer every time.

WARRANTY

ALL WITTEK PRODUCTS ARE WARRANTED TO BE FREE FROM DEFECTS IN MATERIALS AND WORKMANSHIP **ONE YEAR FROM DATE OF PURCHASE** AND SUBJECT TO LIMITATIONS & GUIDELINES LIST BELOW:

THE WARRANTY DOES NOT COVER NORMAL WEAR AND TEAR, ABUSE, OVERLOADING ALTERATIONS, IMPROPER FLUIDS OR USE IN A MANNER THAT EQUIPMENT WAS NOT INTENDED.

THE WARRANTY DOES NOT COVER MALFUNCTION OR DAMAGE DUE TO OPERATION NOT IN COMPLIANCE WITH THE OPERATION INSTRUCTIONS IN THIS MANUAL. WARRANTY DOES NOT COVER NEGLIGENCE DUE TO NOT PERFORMING PERIODIC INSPECTIONS & MAINTENANCE. THESE PROCEDURES ARE NECESSARY TO DISCOVER ANY INDICATION OF MALFUNCTION OR FAILURE AND MAINTAIN PEAK PERFORMANCE. PLEASE REFER TO MAINTENANCE SECTION OF THIS MANUAL FOR GUIDELINES ON INSPECTION INTERVALS & PROCEDURES.

IF YOU BELIEVE A PRODUCT IS DEFECTIVE PLEASE CONTACT US IMMEDIATELY SO THE APPROPRIATE ACTION CAN BE TAKEN.

UNPACKING & INSPECTION

Wittek Twist Washers are packed complete with all components and parts. Before assembly check that all parts are accounted for. Contact us at 1-800-869-1800 immediately if anything is missing.

The Wittek Twist Ball Washer contains:

BOX 1: Ball Washer Top

BOX 2: Ball Washer Bottom

At the time of unpacking please examine the shipment for loss or damage. Inspect all components for visible damage. If any damage or loss is discovered, take pictures and report it to us at 1-800-869-1800 so we can take the appropriate action

ASSEMBLY & INSTALLATION

Wittek Twist Ball Washers are packed complete with all components and parts. Before assembly check that all parts are accounted for. Contact us at 1-800-869-1800 immediately if anything is missing.

Tools & Supplies needed: PVC Tubing & Hose Clamps

Assemble WASHER:

1. Start with PALLET - remove all wrap and packaging. Remove the top and bottom from boxes.
2. PLACE washer on level ground, concrete is preferable. Move both pieces close to final washing station.
3. POSITION washer in sheltered or roofed location with adequate clearance on all sides and overhead for loading balls into hopper.
4. BOLTING the unit to the floor is OPTIONAL.
5. PLACE the top and bottom by inserting hinge holes into pin on bottom.
6. LOWER top down to close.

Connect WASHER:

1. CONNECT plug from motor to the HOPPER section of WASHER (Shorter Cord).
2. CONNECT electric CORD (Longer Cord) to supply, ensure the cord is clear from potential pinch points and water.
3. Fill the tank with water until you reach the level mark.

Your Wittek Twist Ball Washer is now completely assembled and ready for use.

OPERATION & USE

Each range is unique so washing frequency will be specific and different for every range. For increased operational reliability and service life, we recommend the following general guidelines for the best use:

Only wash golf balls in the Wittek Twist Ball Washer

Before use, evaluate picked golf balls for debris like sticks, rocks, broken tees and balls. Remove before cleaning cycle. Doing so will keep the machine washing properly. Excessive debris can cause damage to machine and void warranty.

A cup of Wittek Golf Ball Soap can be added for a thorough clean

Always turn on the machine before feeding balls into hopper.

When feeding balls into hopper, observe and make sure balls roll smoothly through washer and exit ball chute into basket.

PROHIBITED USE:

Never operate machine with lid open.

Do not run golf balls through cycle without water. Serious damage to balls can occur by running a dry machine.

Never use or add laundry detergents, liquid dish soaps, harsh chemicals to the machine. Only use low-suds detergents. Use of anything else can cause damage to brushes, golf balls and machine.

Do not overload washer with more balls than capacity limits:

Wittek Twist Ball Washer Hopper Capacity: 300 balls.

**Modifying with components or parts not intended for the Wittek Twist Washer
Always use Wittek Twist replacement parts that are intended for Twist Washers approved by us.**

MAINTENANCE

Wittek Washers are designed to provide many years of reliable operation. However, it is recommended to follow a regular inspection and maintenance schedule to discover any malfunctions early to prevent breakdowns. This will ensure optimum ball washing and a long service life.

ALWAYS TURN MACHINE OFF AND DISCONNECT FROM POWER SUPPLY WHEN WORKING ON MACHINE TO AVOID ELECTRICAL SHOCK AND PERSONAL INJURY. NEVER INSERT HAND IN MACHINE WHILE ON! WASHING DOWN EXTERIOR OF MOTOR VOIDS ALL MOTOR RELATED WARRANTY!

Below is a recommended maintenance schedule:

DAILY:

Check cords for frays or deteriorations.

Drain water at the end of each day and when exceptionally dirty. Hose down the inside of the machine to clear excessive dirt and debris.

Remove objects that became lodged in brush during washing cycles. For example, broken golf balls, tees, rocks, sticks, etc.

MONTHLY:

Remove belt guard, inspect belt tension. If belt is too stretched it may need adjusting or replacing.

Inspect brush for excessive wear. Call us at 1-800-869-1800 or visit us online to order replacements then follow Replacement Procedure on page 8.

SEASONAL STORAGE:

Thoroughly wash, clean and dry washer. Lubricate all nuts, bolts, chains and gears. Replace any that are rusted or damaged. Store undercover or sheltered to protect from extreme weather & climate conditions.

PART REPLACEMENT PROCEDURE

WASHER REPLACEMENT PARTS are available on our online store at www.wittekgolf.com or contact us at 1-800-869-1800 for quick shipment.

Tools needed: 1/2" Wrench or Socket

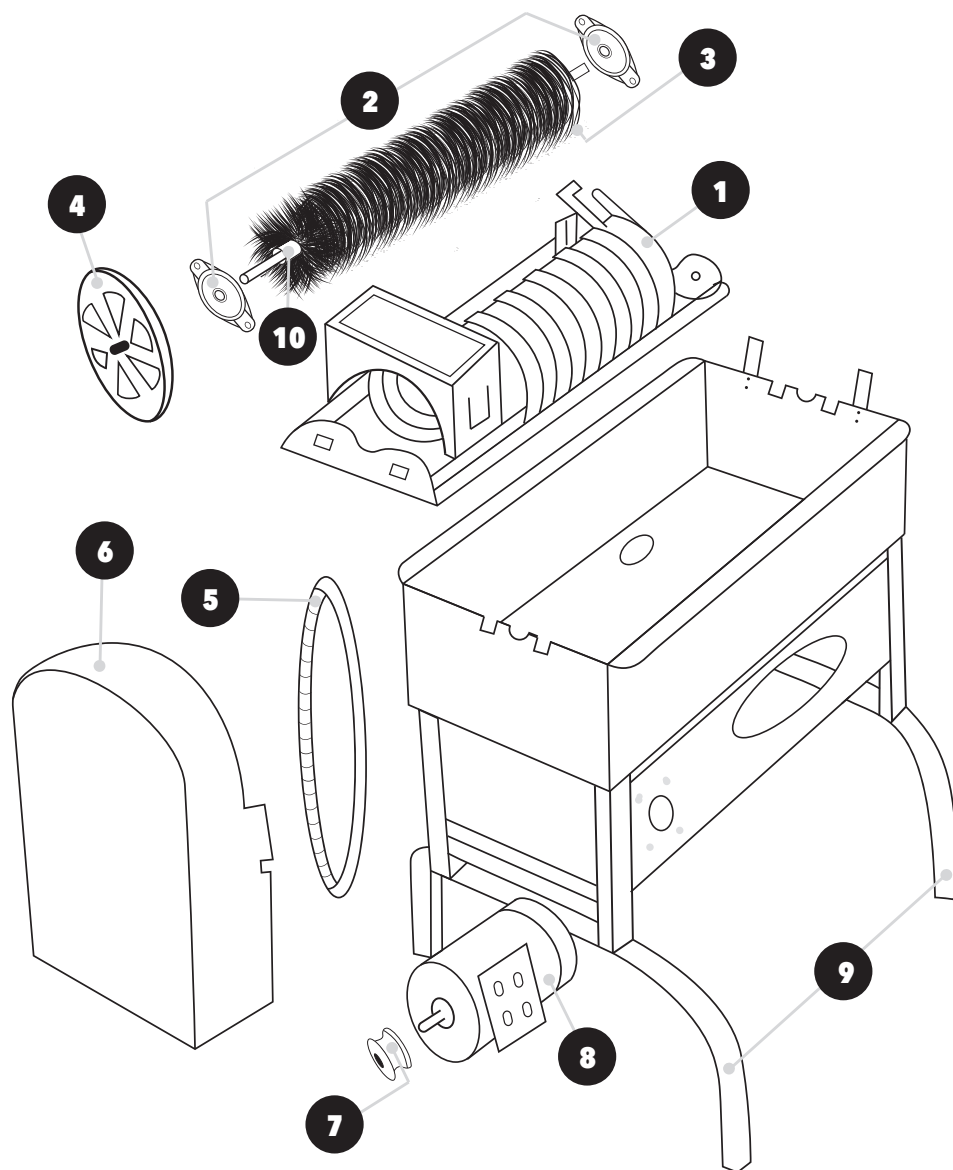
1. Start by REMOVING top assembly, to expose tank.
2. REMOVE BELT GUARD to expose PULLY'S and BELTS.
3. REMOVE BELT and UPPER PULLY from SHAFT.
4. REMOVE SHAFT BEARINGS from each end of SPIRAL.
5. REMOVE two nuts from both ends of SPIRAL and REMOVE CAREFULLY.
6. PULL out BRUSH and SHAFT ASSEMBLY.
7. INSTALL NEW BRUSH and SHAFT ASSEMBLY. If replacing only brush, remove screws from brush end and slide brush from shaft. Slide new brush onto shaft and install new screws that were supplied with brush replacement.
8. REINSTALL BRUSH into SPIRAL and POSITION SPIRAL back into tank assembly.
9. REPLACE SHAFT BEARINGS on each end of SPIRAL.
10. REPLACE PULLY on SHAFT and INSTALL BELT. ADJUST BELT TENSION and TIGHTEN FOUR 5/16" NUTS using a 1/2" SOCKET.
11. REPLACE BELT GUARD.
12. REINSTALL top ASSEMBLY.

TROUBLESHOOTING

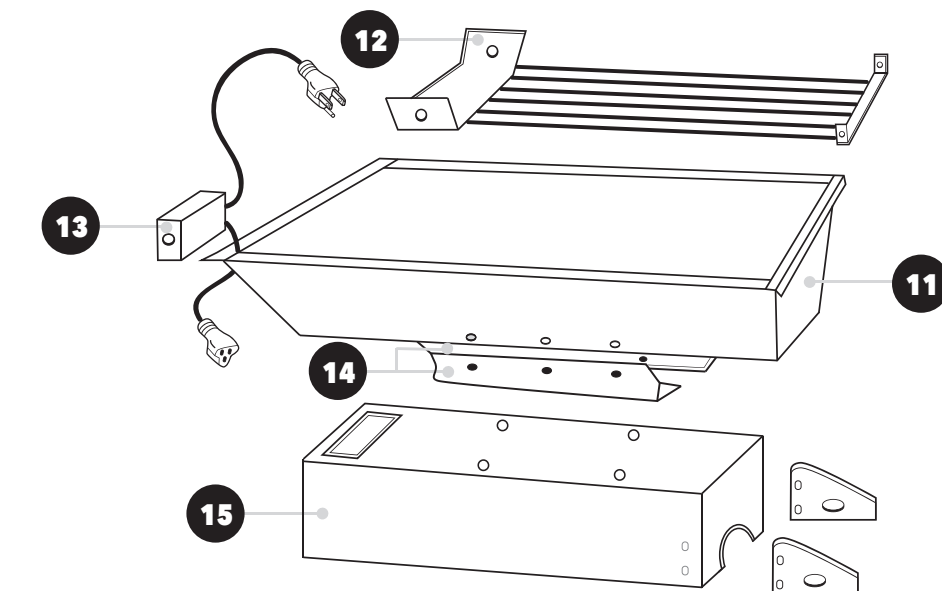
Wittek Washers are one of the most reliable and effective models of ball washers currently on the market. However, occasionally there may be a malfunction. These are caused for different reasons. Below is a list of the most common and our recommended solutions:

PROBLEM	REASON	SOLUTION
Washer won't turn ON	Power outage or circuit tripped Power cord unplugged Faulty toggle switch Water in motor	Check circuit breaker Plug cord into power supply Replace toggle switch Replace motor
NO Balls Exiting	Feeder track blocked Spiral track blocked Brush worn out	Check washer exit and spiral and clear debris Ensure spiral track is properly aligned to exit Replace brush
Balls NOT Clean	Dirty water Worn out brush	Change water Replace brush
CHEWED up Balls	Object and debris lodged in brush No water in tank	Check & remove objects lodged in brush and spiral Fill tank with water to proper depth
Balls DROPPING to Bottom of Tank	Spiral misaligned or worn out	Replace brush and/or spiral Ensure spiral is aligned properly to exit tract/feeder tube
SQUEAKING or SQUEALING Noises	Bearings are worn out	Replace bearing and grease gears Motor may need replacing
GETTING SHOCKED	Ground wire loose	Remove power, open electrical box on ball tray and secure ground wire.

WITTEK TWIST BALL WASHER OPERATIONAL & REPAIR MANUAL



1. **SPIRAL** P2BW10
2. **BEARINGS** P2BW06
3. **LARGE PULLEY** P2BW04
4. **DRIVE BELT** P2BW03
5. **BELT GUARD** P2BW15
6. **SMALL PULLEY** P2BW05
7. **1/3 HP MOTOR** P2BW01
8. **LEGS** P2BW21



9. **TOP** P2BWT
10. **GRATE** P2BW12
11. **SWITCH** P2BW02
12. **TRAY BRACKETS** P2BW13
13. **SPIRAL COVER** P2BW14

REPLACEMENT PART SHEET FOR TWIST

ITEM	NUMBER	DESCRIPTION
	P2BW01	1/3 HP Motor Domestic
	P2BW02	On/Off Switch
	P2BW03	Drive Belt
	P2BW04	Large Pulley
	P2BW05	Small Pulley
	P2BW06	Bearing
	P2BW07	Brush With Shaft
	P2BW19	Industrial Brush
	P2BW20	Industrial Brush With Shaft
	P2BW10	Zinc Spiral
	P2BW11	Ball Tray Only (No Grate)
	P2BW12	Ball Tray Grate
	P2BW13	Ball Tray Riser Brackets (Pair)
	P2BW14	Zinc Spiral Cover
	P2BW15	Belt Guard
	P2BW16	Rebuild Kit
	P2BW17	Drain Valve Kit
	P2BW18	P2 Wheel Kit
	P2BW21	Leg Extensions
	P2BWBD	P2 Washer Bottom Domestic Complete
	P2BWT	P2 Washer Top Complete

Wittek products are warranted to be free of defects in materials and workmanship under normal use and subject to the guidelines and limitations listed. This warranty does not cover: normal wear & tear, abuse, overloading, alterations, improper fluid or use in a manner for which they are not intended. If you believe a product is defective, the product must be delivered, or shipped to Wittek Golf Products for evaluation and repair.



300 BOND ST
ELK GROVE VILLAGE, ILLINOIS 60007