

# Eagle Lite

## 3 & 5 Gang Manual



Call 1-800-869-1800 or go online at [wittekgolf.com](http://wittekgolf.com) to order!



## **UNPACKING AND INSPECTION**

The Witttek Eagle Lite Pickers are packed complete with all component parts in two specially designed corrugated containers.

### **3 – Gang Eagle Lite Ball Picker (Three Section)**

One carton contains:

1 – DRAW BAR

One pallet contains:

3 – PICKER SECTIONS

6 – PICKER BASKETS

1 – PUSH BAR (H-BAR) COMPLETE WITH 4 (7") CONNECTING RODS AND 8 RETAINING PINS

1 – VEHICLE ATTACHMENT BAR COMPLETE WITH BOLT WITH WASHER & NUT (ATTACHED TO PUSH BAR)

1 – FRONT WHEEL PACKAGE

2 – BACK SHORT ROD COMPLETE WITH HARDWARE

### **5 – Gang Eagle Lite Ball Picker (Five Section)**

Contains the same items listed under the 3-gang in addition to the following:

2 – ADDITIONAL PICKER SECTIONS

4 – ADDITIONAL PICKER BASKETS

1 – LEFT WING COMPLETE WITH 7" CONNECTING ROD AND RETAINING PIN

1 – RIGHT WING COMPLETE WITH 7" CONNECTING ROD AND RETAINING PIN

2 – ADDITIONAL BACK SHORT RODS COMPLETE WITH HARDWARE

### **Inspection**

Check that all components are accounted for. Contact factory **immediately** if any components are missing.

Inspect all components for visible damage. If any damage is discovered, report it to the shipping carrier and take the appropriate action. Check that all moving parts move and turn freely.

**CUSTOMER IS RESPONSIBLE FOR FILING ANY DAMAGE CLAIMS WITH THE CARRIER.**

## **ASSEMBLY OF THE 3-GANG AND 5-GANG**

Assemble the picker on level ground

### **Installing the rear picker sections:**

1. Remove shaft collar and retaining pin on short rod (back)
2. Insert short rod (back) arm upward through sleeve of draw bar
3. Replace shaft collar and retaining pin

### **Installing the front wheel fork:**

1. Remove shaft collar and retaining pin on front wheel fork section
2. Insert the front wheel fork rod upward into the front wheel frame
3. Replace shaft collar and retaining pin

### **Installing the front wheel package:**

1. Remove shaft collar and retaining pin on top front wheel package rod
2. Insert the front wheel package rod upward through sleeve of draw bar
3. Replace shaft collar and retaining pin

### **Installing the front picker section:**

1. Remove shaft collar and retaining pin on side front wheel package rod
2. Insert the front wheel package rod through sleeve of front picker frame
3. Replace shaft collar and retaining pin

### **Mounting the push bar (H-Bar):**

1. Remove the two connecting rods from the push bar
2. Align the mounting sleeves on the end of the push bar with the corresponding mounting sleeves on the back of the draw bar
3. Insert the connecting rods through the sleeves and replace retaining pins

### **Installing the 5-gang additional parts:**

1. Remove the connecting rods from the left and right wings and align the mounting sleeves to the appropriate side on the drawbar.
2. Insert the connecting rods through the sleeves and replace retaining pins.
3. Remove shaft collar and retaining pin on short rod (back)
4. Insert short rod (back) arm upward through sleeve of draw bar.
5. Replace shaft collar and retaining pin.
6. Repeat process (3 – 5) for other frame section.

THE EAGLE LITE PICKER IS NOW COMPLETELY ASSEMBLED AND READY TO BE MOUNTED TO THE DRIVE VEHICLE.

## **Mounting the vehicle attachment bar:**

### **NOTES**

Because of styling and manufacturing differences in golf carts, the Wittek vehicle attachment bar may not clear front wheels and tires, and a special extension/adapter bracket will be required.

If optional adapter bracket wasn't purchased, be sure to mount the attachment bracket onto the frame or on a sturdy portion of the frame on the golf cart.

1. Position the vehicle attachment bar in the desired area on the golf cart.
2. Mark the location of the mounting bolt.
3. Drill a hole to accommodate the mounting bolt.
4. Install the vehicle attachment bar.
5. Remove the connecting rods from vehicle attachment bar and align the mounting sleeves.
6. Replace the connecting rods and retaining pins.

**AT THIS TIME, PLACE THE PICKER BASKETS IN THE APPROPRIATE SPACES.**

**THE EAGLE LITE PICKER IS NOW READY FOR OPERATION.**

## **OPERATION AND USE**

Specifics, such as travel patterns and picking frequency, are unique to each individual range. Through repeated use, range operators will learn to adapt to the use of the EAGLE LITE to their best advantage. The following are some general guidelines for the best use of the EAGLE LITE.

### **Picking Operation**

Maintain vehicle speed of 5-8 mph.

Avoid sharp turns, which can turn the front picker section to an extreme angle and create a gap that misses balls.

Gauge the use of the EAGLE LITE on weather and ground conditions that would affect the use of golf carts.

Avoid abrasive surfaces, such as paved parking lots, asphalt or concrete, stone or gravel road, or cart paths.

Clean the picker at the end of each day or more often in extremely wet or muddy conditions. Use a mild soap with a moderate flow of water.

### **Preventive Maintenance**

Lubricate the front wheel (for optional front wheel package) weekly or more often depending on use. These hubs are fitted with Zerk fittings for this purpose. Use a lithium axle or bearing packing grease.

Spray all moving metal contact points with a petroleum-distillate based aerosol lubricant every week or more often depending on use.

Check all retaining pins and mounting bolts, tie rod ends, shaft collars, and draw bar connections at least once a week or more depending on usage.

### **Off-Season Storage**

Disassemble picker and store in a shelter protected from extreme weather conditions.

When disassembled, keep all post assembly brackets and connecting rods and pins in a safe place to avoid loss.

Be aware of specific weather or climatic conditions (extreme aridity or salt/sea humidity, etc.), and apply appropriate storage precautions to machinery.

### **Removing From Storage**

Coat all moving metal contact points (shafts, bearings and axles, etc.) with a liberal amount of non-gumming Teflon or petroleum-distillate based aerosol lubricant with a clean, lint-free cloth or towel.

## REPLACING WORN OR DAMAGED DISCS

These instructions are for replacing worn or damaged discs of the drum section.

### Preparations:

1. Remove drum section from frame by loosening and then removing barrel brackets.
2. Determine the shortest point to worn/damaged disc.

### Removing discs:

1. Remove nylon lock nuts and washers from tie rods.

**NOTE:** WITTEK uses nylon lock nuts on all nuts and bolts combinations. It is recommended that when replacing the lock nut, a **new** nylon lock nut is used. Nylon lock nuts can be purchased at any hardware store (standard size of 3/8" is used).

2. Begin to remove discs until you reach the worn/damaged disc.
3. Replace old disc with new disc.

### Reassembling discs:

Replace disc(s) that were removed.

**NOTE:** *Lightly* sand the shaft to smooth out beveled edges or other nicks created by the set screw.

1. Replace washers and nuts on tie rods.
2. Finger tighten all nuts **evenly**.
3. Place drum section on a flat surface (i.e. worktable).
4. Using a golf ball as a guide tool, insert the golf ball in the space between each disc to determine that the golf ball fits "snugly" and that the golf ball does not slide down. If sliding occurs, retighten the nuts on the tie rods until you have reached the desired snugness in each disc section.

### **DO NOT OVER TIGHTEN NUTS!!**

5. Replace drum onto frame of picker.
6. Align the drum section by centering the fingers on the frame in each disc section.
7. TIGHTEN set screws on barrel brackets on **both** ends of drum section.

## REPLACEMENT PARTS AND REPAIRS

EAGLE LITE pickers are designed for continuous use and are virtually indestructible. However, certain component parts, such as discs and baskets, are subject to wear and deterioration and may eventually require replacement.

Many components of the EAGLE LITE picker are maintained in stock at the factory for immediate delivery. In emergency cases, parts can be shipped via Next Day delivery.

When ordering parts, refer to the item and part numbers listed in the Replacement Parts Section of this manual. Always identify picker model and serial number as found on the identification sticker located on the top of the draw bar. If the model and serial numbers are unavailable, identification can be made through parts measurements. Consult factory for details.

**In cases of older pickers, some parts may have become obsolete because of design or engineering changes. Many outdated parts are maintained in inventory, or can be manufactured. Consult factory for details.**

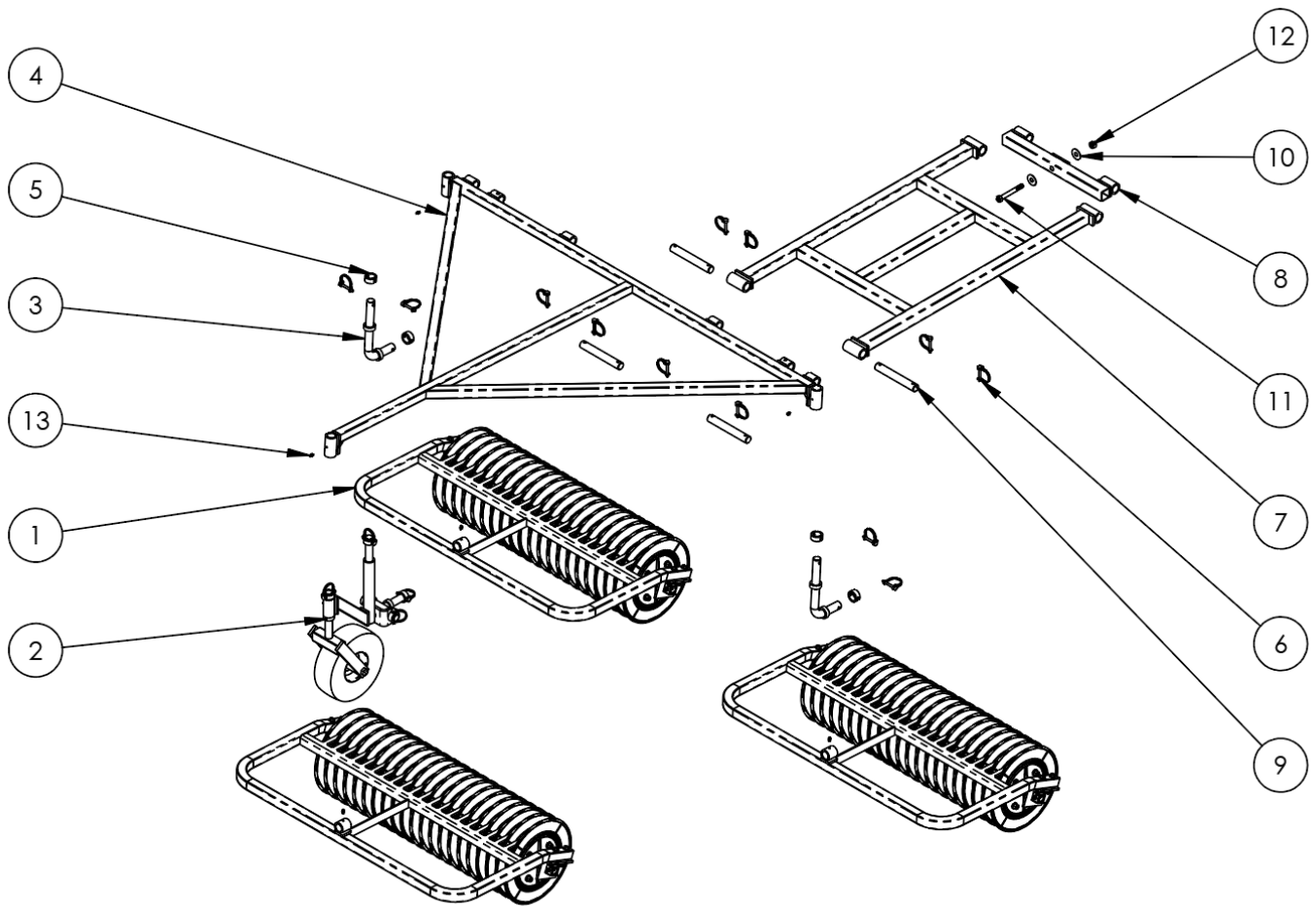
Extremely worn or old pickers may require installation of a complete replacement drum section. Consult factory for details.

All assemblies and replacements of the EAGLE LITE picker utilize standard hardware and can be accomplished by maintenance personnel. Be sure to follow all fundamental operation and safety rules when working machinery.

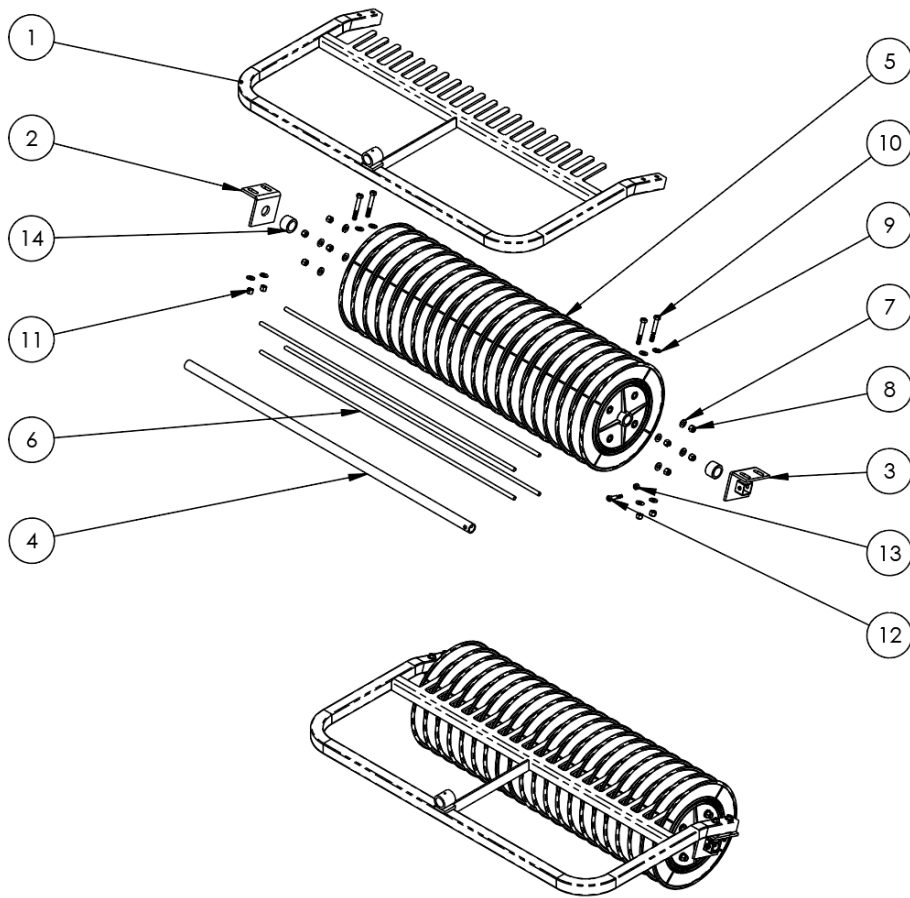
## **EAGLE LITE 3 Gang Ball Picker Replacement Parts**

<u>M-714-1</u>	Eagle Lite Drawbar	1
<u>M-714-2</u>	Eagle Lite Picker Frame	3
<u>M-714-3</u>	Eagle Lite Picker Post	2
<u>M-714-5</u>	Barrel Brackets with Axel Mount	3
<u>M-714-6</u>	Barrel Brackets w/o Axel Mount	3
<u>M-714-7</u>	1" O.D. Axel	3
<u>M-99-015</u>	3/8"-16 x 2 1/2" HHCS	12
<u>M-99-001</u>	3/8" US FLATWASHER	12
<u>M-99-004</u>	3/8"-16 NYLON LOCKNUT	12
<u>M-719-59</u>	5/16-18 x 1 3/4" HHCS	3
<u>M-719-34</u>	5/16" NYLON LOCKNUT	3
<u>71984</u>	Retaining Pin 5/16" X 1 3/4" Hoop	12
<u>71763</u>	Eagle Lite Front Wheel Package	1
<u>M-719-58</u>	1" DRILLED SHAFT COLLAR	6
<u>M-714-10</u>	Axle Spacer for 1" O.D.	6
<u>M-714-11</u>	Eagle Lite Tie Rod - 5/16"	12
<u>M-714-13</u>	5/16" Nylon Locknut	24
<u>M-719-27</u>	ZERK FITTING	6
<u>WGRM036</u>	Nylon Picker Disc - Black	63
<u>71912</u>	Plastic Picker Basket	6
<u>71969</u>	H-Bar	1
<u>71976</u>	Bh & Rr Vehicle Attachment Bar	1
<u>71981</u>	2001 Bh 7" Connecting Rod	4





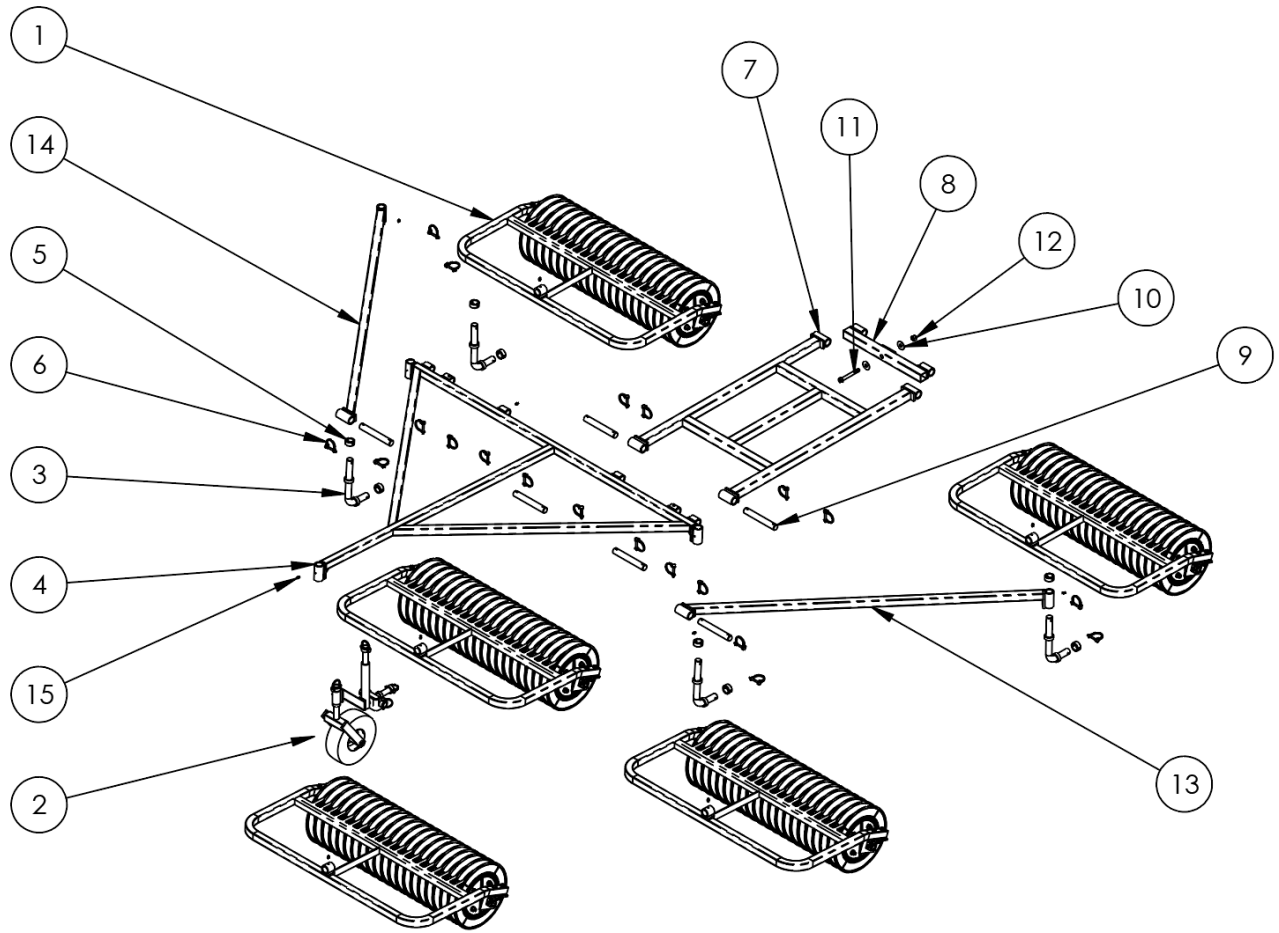
ITEM NO.	PART NO.	DESCRIPTION	QTY.
1	M-714-2	Eagle Lite Picker Gang Frame	3
2	71763	Eagle Lite Front Wheel Package	1
3	M-714-3	Eagle Lite Picker Post	2
4	M-714-1	Eagle Lite Drawbar	1
5	M-719-58	1" Drilled Shaft Collar	6
6	71984	Retaining Pin 5/16" X 1 3/4" Hoop	12
7	71969	H-Bar	1
8	71976	Vehicle Attachment Bar	1
9	71981	7" Connecting Rod	4
10	M-719-47	5/8" US FLATWASHER	2
11	M-719-43	5/8-11 x 4" HHCS	1
12	M-71-15	5/8"-11 NYLON LOCKNUT	1
13	M-719-27	Zerk Grease Fitting	6



ITEM NO.	PART NO.	DESCRIPTION	QTY.
1	M-714-2	Eagle Lite Picker Gang Frame	1
2	M-714-6	Barrel Brackets w/o Axel Mount	1
3	M-714-5	Barrel Brackets with Axel Mount	1
4	M-714-7	1" O.D. Axel	1
5	WGRM036	Nylon Picker Disc – Black	20
6	M-714-11	Eagle Lite Tie Rod - 5/16"	4
7	M-99-003	1/4" US FLATWASHER	8
8	M-714-13	5/16" Nylon Locknut	8
9	M-99-001	3/8" US FLATWASHER	8
10	M-99-015	3/8"-16 X 2-1/2" HHCS	4
11	M-99-004	3/8"-16 NYLON LOCKNUT	4
12	M-719-59	5/16-18 x 1 3/4" HHCS	1
13	M-719-34	5/16" NYLON LOCKNUT	1
14	M-714-10	Axle Spacer for 1" O.D.	2

## EAGLE LITE 5 Gang Ball Picker Replacement Parts

<u>M-714-1</u>	Eagle Lite Drawbar	1
<u>M-714-2</u>	Eagle Lite Picker Frame	5
<u>M-714-3</u>	Eagle Lite Picker Post	4
<u>M-714-5</u>	Barrel Brackets with Axel Mount	5
<u>M-714-6</u>	Barrel Brackets w/o Axel Mount	5
<u>M-714-7</u>	1" O.D. Axel	5
<u>M-714-8</u>	Eagle Lite Extension Bar Left	1
<u>M-714-9</u>	Eagle Lite Extension Bar Right	1
<u>M-99-015</u>	3/8"-16 x 2 1/2" HHCS	20
<u>M-99-001</u>	3/8" US FLATWASHER	20
	3/8"-16 NYLON	
<u>M-99-004</u>	LOCKNUT	20
<u>M-719-59</u>	5/16-18 x 1 3/4" HHCS	5
<u>M-719-34</u>	5/16" NYLON LOCKNUT	5
<u>71984</u>	Retaining Pin 5/16" X 1 3/4" Hoop	20
<u>71763</u>	Eagle Lite Front Wheel Package	1
<u>M-714-10</u>	Axle Spacer for 1" O.D.	10
<u>M-714-11</u>	Eagle Lite Tie Rod - 5/16"	20
<u>M-714-13</u>	5/16" Nylon Locknut	40
<u>M-719-27</u>	ZERK FITTING	10
<u>WGRM036</u>	Nylon Picker Disc - Black	105
<u>71912</u>	Plastic Picker Basket	10
<u>71969</u>	H-Bar	1
<u>71976</u>	Vehicle Attachment Bar	1
<u>71981</u>	7" Connecting Rod	6



ITEM NO.	PART NO.	DESCRIPTION	QTY.
1	M-714-2	Eagle Lite Picker Gang Frame	5
2	71763	Eagle Lite Front Wheel Package	1
3	M-714-3	Eagle Lite Picker Post	4
4	M-714-1	Eagle Lite Drawbar	1
5	M-719-58	1" Drilled Shaft Collar	10
6	71984	Retaining Pin 5/16" X 1 3/4" Hoop	22
7	71969	H-Bar	1
8	71976	Vehicle Attachment Bar	1
9	71981	7" Connecting Rod	6
10	M-719-47	5/8" US FLATWASHER	2
11	M-719-43	5/8-11 x 4" HHCS	1
12	M-71-15	5/8"-11 NYLON LOCKNUT	1
13	M-714-8	Eagle Lite Extension Bar Left	1
14	M-714-9	Eagle Lite Extension Bar Right	1
15	M-719-27	Zerk Grease Fitting	10