



WITTEK GOLF SUPPLY
300 Bond Street
Elk Grove Village
IL - 60007, USA
1-800-869-1800
<https://www.wittek.com>

73178-SD-INS (SQUARE D STARTER SWITCH & THERMAL UNIT INSTRUCTIONS)

(SE-2041FO1 WIRING DIAGRAM 1.0)

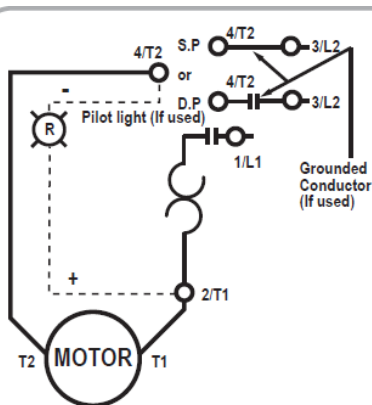
73178-SD-INS (SQUARE D STARTER SWITCH & THERMAL UNIT INSTRUCTIONS)

(SE-2041FO1 WIRING DIAGRAM 1.0)

73178-SD-INS (SQUARE D STARTER SWITCH & THERMAL UNIT INSTRUCTIONS)

(SE-2041FO1 WIRING DIAGRAM 1.0)

Manual Motor Starter, Toggle, No Enclosure Enclosure NEMA ...



For continuous-rated motors having service factors of 1.15 to 1.25, select thermal units directly from table using 100% of full load current (FLC) shown on motor nameplate. For continuous-rated motor having a service factor of 1.0 select thermal units from table using 90% of FLC shown on motor nameplate. Rating of branch-circuit fuses or circuit breakers must comply with applicable codes. If fuses are used do not exceed the maximum fuse rating shown opposite the thermal unit selected. Fuses may need to be of the time delay type to permit motor starting. Class K5 or class R fuses recommended. If available short-circuit current is 1000 A symmetrical or less, non-time delay fuses whose rating does not exceed 300% of motor FLC may also be used. Trip current rating in a 40°C (104°F) ambient temperature is 1.25 times the minimum FLC shown for the thermal unit selected. Instructions given above assume that the motor and the controller are located in approximately the same ambient temperature. For other conditions, consult the manufacturer.

NOTE

To operate, install thermal unit and reset by depressing handle beyond normal "off" position. If replacing Type "A" starter, note change in location of L1 and T2. Lamp is polarity sensitive in DC applications.

73178-SD-INS (SQUARE D STARTER SWITCH & THERMAL UNIT INSTRUCTIONS)
 (SE-2041FO1 WIRING DIAGRAM 1.0)

Product Specific Information Manual

1LPU3A, 1LPU4A and 1LPU5A

Read the Gearmotor Installation and Maintenance Information Manual 85707 included with this product before installing or performing maintenance. Read this document carefully before attempting to disassemble, reassemble, operate or maintain the product described. Protect yourself and others by observing all safety information. Failure to comply with instructions could result in personal injury and/or property damage! Retain instructions for future reference.

Dayton® Split Phase Gearmotors

Refer to Form 85707 for Safety and Installation, Operation and Maintenance Instructions and Warranty Information

WARNING Make certain power supply is disconnected before attempting to service or remove any components! If the power disconnect point is out of sight, lock it in the open position and tag to prevent unexpected application of power.

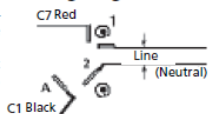
Disassembly Instructions

1. Remove any burrs or sharp edges from the output shaft, especially at the keyway. This practice will avoid damaging the grease seal or output shaft when the gearcase cover is removed.
2. Remove the screws from the face of the gearcase.
3. With the unit resting with the output shaft up, remove the cover.
4. With the gearcase now disassembled, the gears can be removed.
5. The motor assembly may be disassembled by removing the screws from the rear of the motor. The motor stator can now be

removed. If necessary, a slight tapping with a rawhide mallet will help removal. The rotor can be removed by gently pulling it from gearcase.

6. The oil seal can be removed by gently prying it from the front of the gearcase. If it is an O-ring type, it removes easily with a small screwdriver.

Wiring Diagram



To Reverse Interchange C7 Red and C1 Black Motor Leads

Reassembly Instructions

1. Assemble rotor and stator gearcase carefully.
2. Clean out gearcase completely and replace gears.

Now replace lubricant into gearcase. Use 3 oz. grease Grainger # 2RV29. Never mix different types of lubricants.

3. If oil seal was removed, clean cavity seat and insert seal. If unit has gasket, replace with new one.
4. Place cover over mating gearcase half, insert screws and tighten.
5. Start and stop unit several times to ensure no parts are binding.

Lubrication

This unit is lubricated at the factory and should not require relubrication under normal running conditions.

CAUTION Completely clean the old lubricant from the gear box before adding fresh lubricant. UNDER NO CIRCUMSTANCES SHOULD DIFFERENT TYPES OF LUBRICANTS BE MIXED!

E
N
G
L
I
S
H

E
S
P
A
Ñ
O
L

F
R
A
N
C
A
I
S

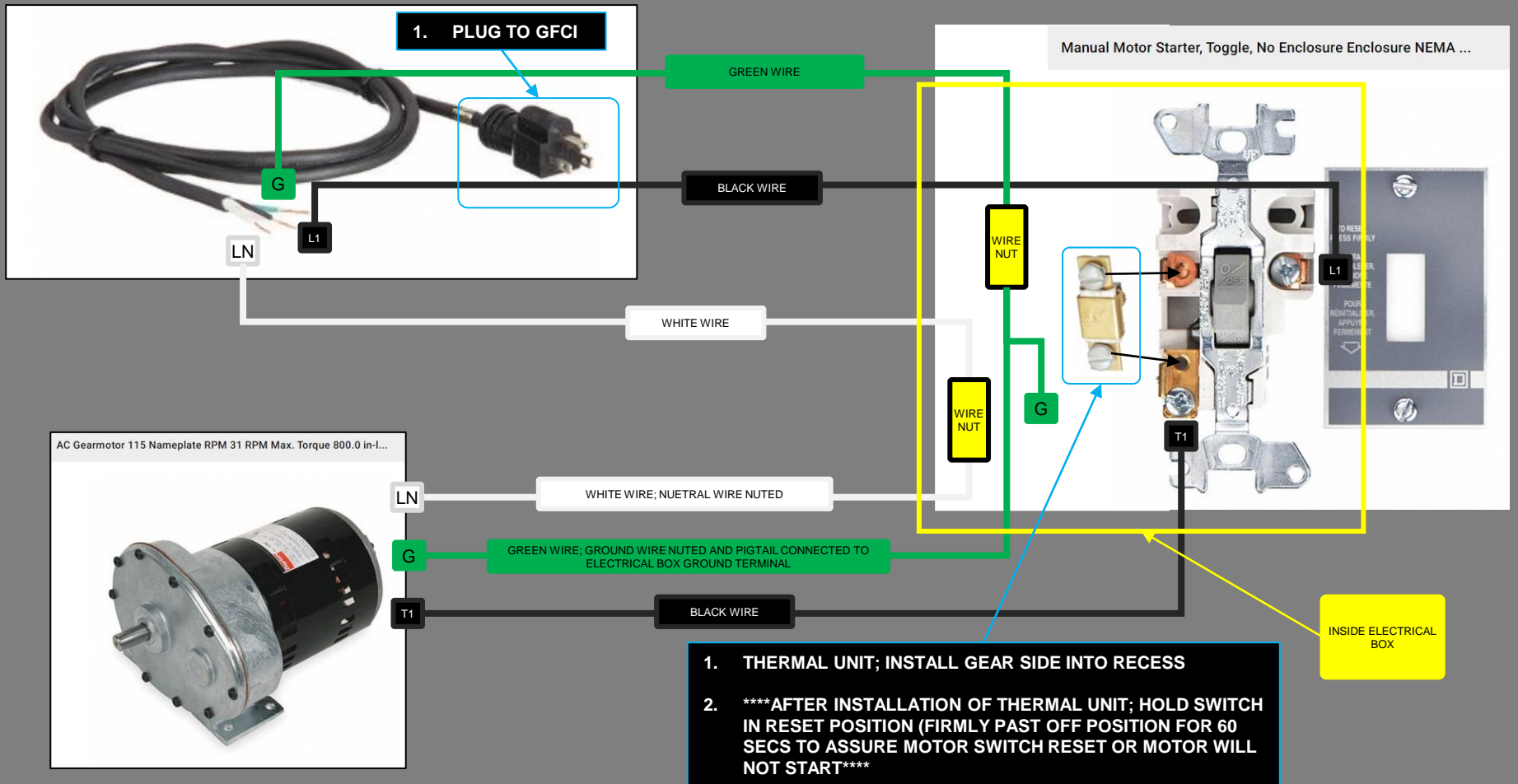
AC Gearmotor 115 Nameplate RPM 31 RPM Max. Torque 800.0 in-l...



115V AC GEAR MOTOR FOR 50G SUPER WASHER

73178-SD-INS (SQUARE D STARTER SWITCH & THERMAL UNIT INSTRUCTIONS)

(SE-2041FO1 WIRING DIAGRAM 1.0)



73178-SD-INS (SQUARE D STARTER SWITCH & THERMAL UNIT INSTRUCTIONS)

(SE-2041FO1 WIRING DIAGRAM 1.0)

To reset, push the switch past the off position until it bottoms out and hold for 60 secs.

Reset should be performed after first install and after the thermal unit trips.

